

ESG data
in LSEG Workspace
Students Manual

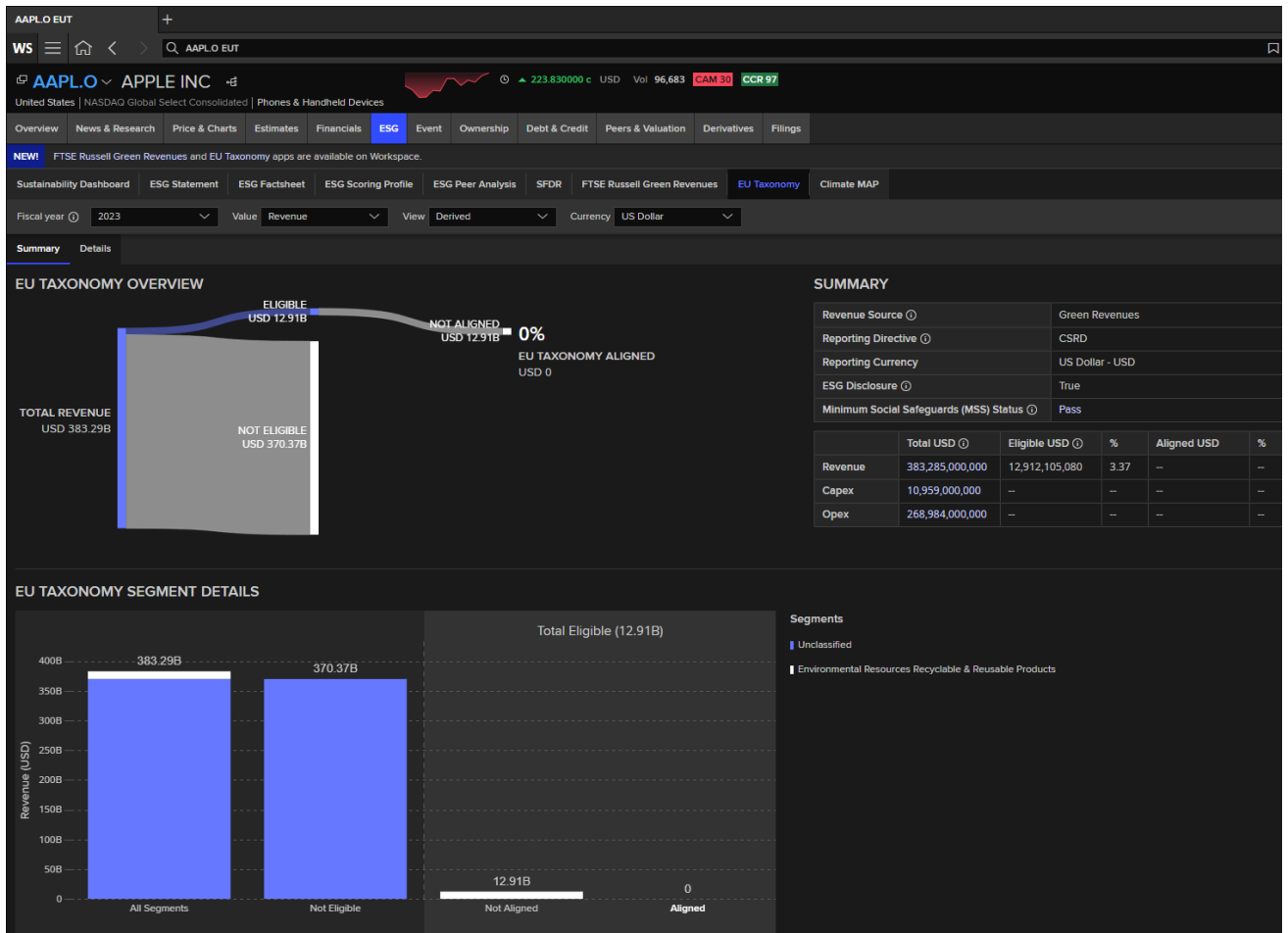
In LSEG Workspace, obtaining ESG data is possible through both the Workspace terminal and Datastream integrated in the Workspace Excel Add-In. Within the WS terminal, you can navigate to the page of the specific company and select the desired ESG ratio from the list at the top of the company's page. The initial page provides a comprehensive overview of the company's ESG ratios, including Eikon ESG Scores across various sustainability pillars.

In the WS terminal, there are 7 subcategories for observing ESG data. It's worth noting that the EU Taxonomy dashboard is accessible.

The screenshot displays the 'AAPLO ESGFACTSHEET' page for Apple Inc. The interface includes a top navigation bar with tabs for Overview, News & Research, Price & Charts, Estimates, Financials, ESG (selected), Event, Ownership, Debt & Credit, Peers & Valuation, Derivatives, and Filings. A sidebar on the left allows for selecting different sections of the factsheet, such as Company Overview, ESG Summary, and ESG Controversies. The main content area is divided into several sections:

- COMPANY OVERVIEW:** A table of key financial and operational metrics.

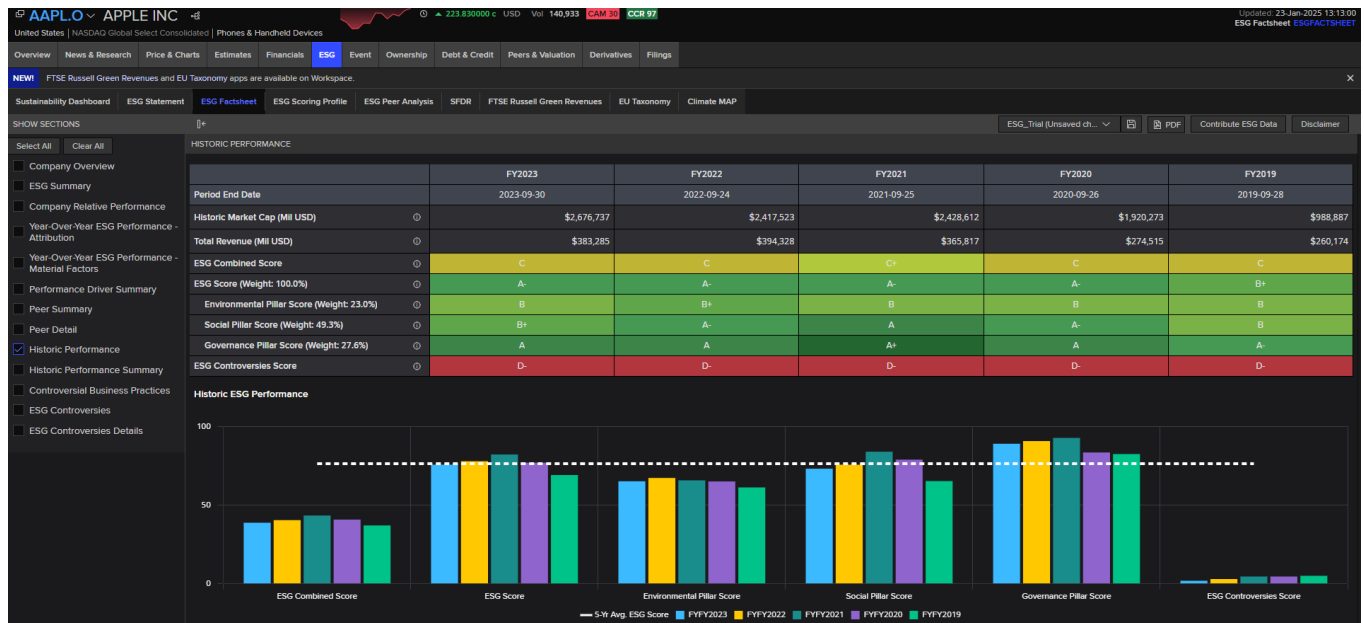
Market Cap. (Mil USD)	\$3,365,927	TRBC Ind. Group	Computers, Phones & Household Electronics	A- ESG Score	D- ESG Controversies Score	C ESG Combined Score
Revenue (Mil USD)	\$391,035	Countries/ Region	United States of America	B Environmental Pillar Score	B+ Social Pillar Score	A Governance Pillar Score
No. of Employees	164,000	Fiscal Yr. End	2023-09-30			
D&I Index Ranking	4161 / 6524	ESG Reporting Scope	100%			
- ESG SUMMARY:** A text-based overview of the company's ESG performance, including its average and median ESG scores and the weighting of Environmental, Social, and Governance pillars.
- ESG Controversies:** Details on the company's controversy score and the factors influencing its ESG Combined score.



The ESG Scoring profile consolidates scores for various sustainability variables, presenting a distinctive diagram that encompasses all pertinent sustainability issues.



Expl. Filter: Historic Performance



See info legend ⓘ

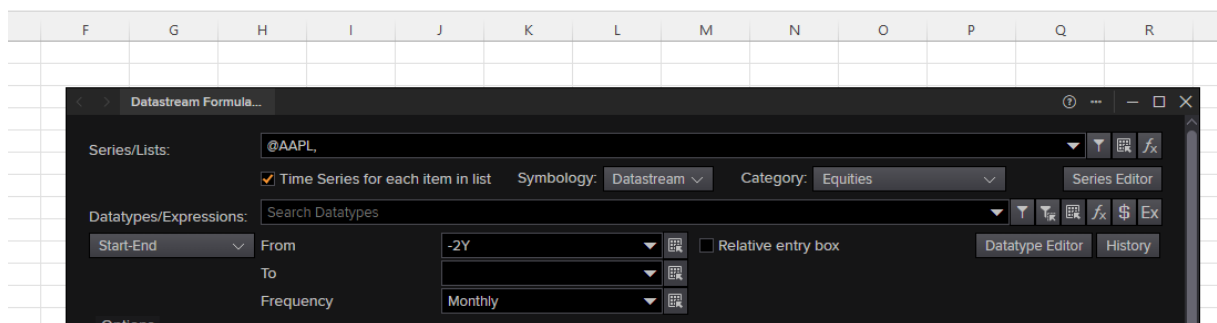
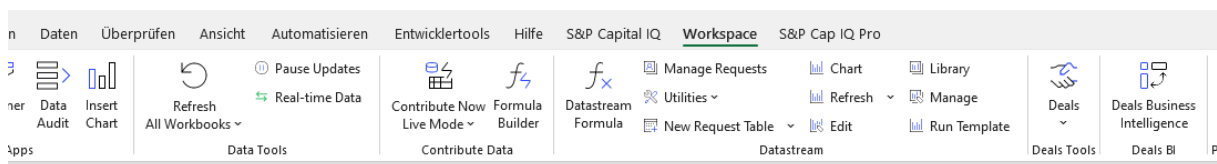
Expl. ENVIRONMENTAL PILLAR SCORE

The environmental pillar measures a company's impact on living and non-living natural systems, including the air, land and water, as well as complete ecosystems. It reflects how well a company uses best management practices to avoid environmental risks and capitalize on environmental opportunities in order to generate long term shareholder value.

Excel Function = TR("AAPL.O", "TR.EnvironmentPillarScore")

Datastream integrated in the Workspace Excel Add-In

Find Series



Find Datatypes

DataStream Navigator

BACK RECENT SEARCHES HELP TRAINING NAVIGATOR

Equities pillars [Share Search Reference](#) MY SELECTIONS (0)

Search Advanced Search

ADD FILTERS << CLEAR ALL

TYPE

Time Series (all)

SOURCE << Stop Filtering

ESG

Equities (filtered) Transfer 1-3 of 3 Sort by Ranking

All	Name	Symbol	Currency
> <input type="checkbox"/> ★ ★	Environment Pillar Score	ENSCORE	N
> <input type="checkbox"/> ★ ★	Governance Pillar Score	CGSCORE	N
> <input type="checkbox"/> ★ ★	Social Pillar Score	SOSCORE	N

Click on rows above for details

DataStream Formula...

Series/Lists: @AAPL

Time Series for each item in list Symbology: Datastream Category: Equities Series Editor

Datatypes/Expressions: ENSCORE,CGSCORE,SOSCORE

Start-End From: -2Y To: Relative entry box Datatype Editor History

Frequency: Monthly

Options

Display Custom Header Edit

Display Row Titles

Display Column Titles

Display Headings

Transpose Data

Display Code

Display Currency

Display Latest Value First

Hyperlink To Series Metadata

Hyperlink To Datatype Definition

Auto Refresh

Auto Resize for Destination Range

Display Expression

1st Series

1st Series & Description

Date Format

Yearly-Date

Quarterly-Date

Monthly-Date

Not Available String

Value in Settings

Value

=DSGRID("@AAPL","ENSCORE,CGSCORE,SOSCORE",-2Y,"M","RowHeader=true;ColHeader=true;Heading=true;DispSeriesDescription=true;YearlyTSPor

Cancel Insert

	A	B	C	D	E	F	G	H	I	J	K	L
1	Start	22.01.2023										
2	End	22.01.2025										
3	Frequency	M										
4	Name	APPLE - Environment Pillar Score	APPLE - Governance Pillar Score	APPLE - Social Pillar Score								
5	22.01.2023	65,08	88,92	73,07								
6	22.02.2023	65,08	88,92	73,07								
7	22.03.2023	65,08	88,92	73,07								
8	22.04.2023	65,08	88,92	73,07								
9	22.05.2023	65,08	88,92	73,07								
10	22.06.2023	65,08	88,92	73,07								
11	22.07.2023	65,08	88,92	73,07								
12	22.08.2023	65,08	88,92	73,07								
13	22.09.2023	65,08	88,92	73,07								
14	22.10.2023											
15	22.11.2023											
16	22.12.2023											
17	22.01.2024											
18	22.02.2024											
19	22.03.2024											
20	22.04.2024											
21	22.05.2024											
22	22.06.2024											
23	22.07.2024											
24	22.08.2024											
25	22.09.2024											
26	22.10.2024											
27	22.11.2024											
28	22.12.2024											
29	22.01.2025											
30												
31												
32												

Note

Any spreadsheets you created with the old **Datastream** should be fully compatible with Workspace. The user interface is different in Workspace since it combines time series and static requests into one menu, but the Datastream Navigator and formulas are the same.

[This document](#) from ESDC Rotterdam provides additional screenshots and instructions. Once you have read these instructions you can continue to use the existing Students manuals for Datastream.