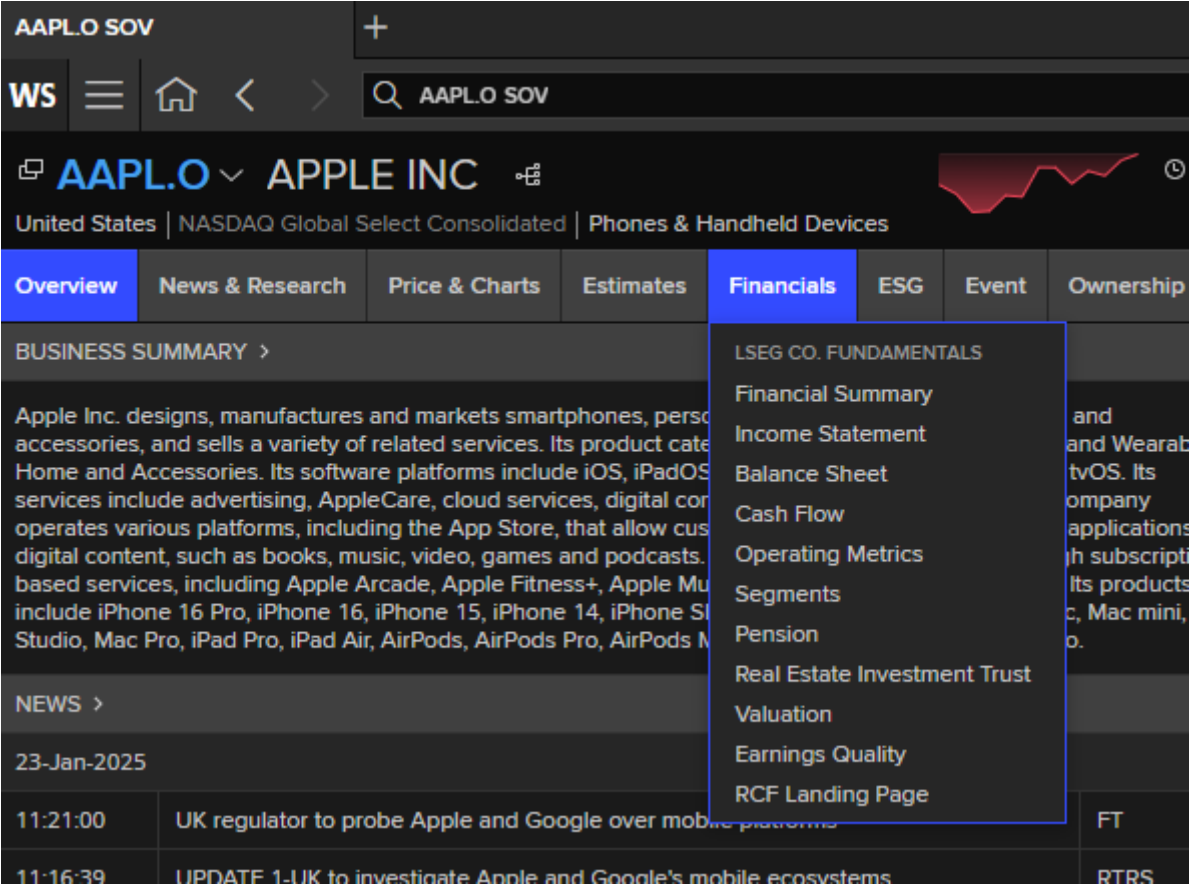
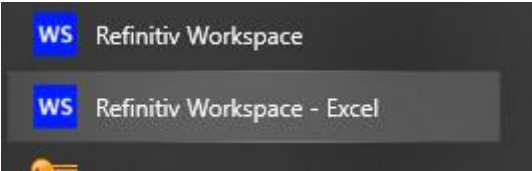


Annual report data
in LSEG Workspace
Students Manual

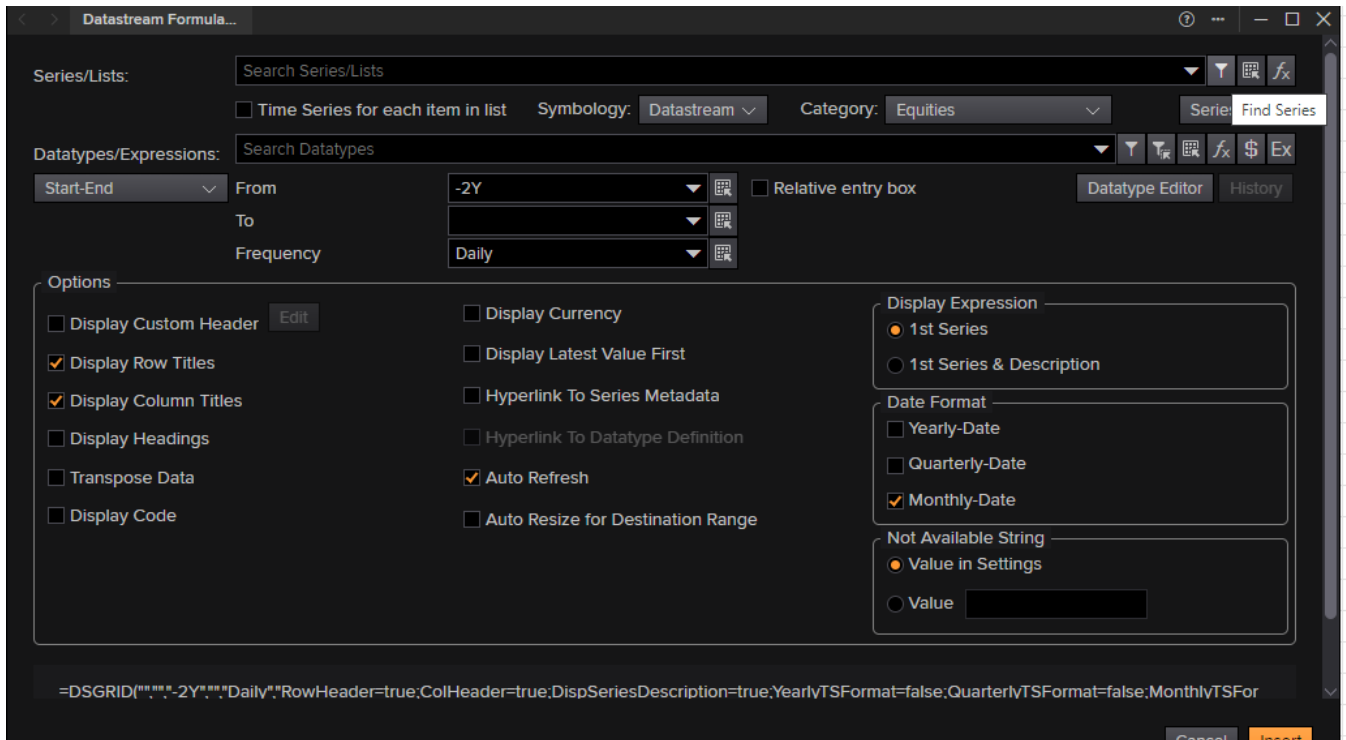
Utilizing LSEG Workspace grants you access to financial statements of publicly traded companies. Workspace offers comprehensive timeframes for the companies within reach.



Datastream via Workspace Excel Add-In



Extracting values from financial statements is facilitated through the "Time Series" request, where identification of necessary financial instruments and variables is accomplished through the "Datatypes" bar. The selection of companies can be streamlined using the "Find Series" bar located above the Datatypes.



Any spreadsheets you created with the old **Datastream** should be fully compatible with Workspace. The user interface is different in Workspace since it combines time series and static requests into one menu, but the Datastream Navigator and formulas are the same.

[This document](#) from ESDC Rotterdam provides additional screenshots and instructions. Once you have read these instructions you can continue to use the existing Students manuals for Datastream.