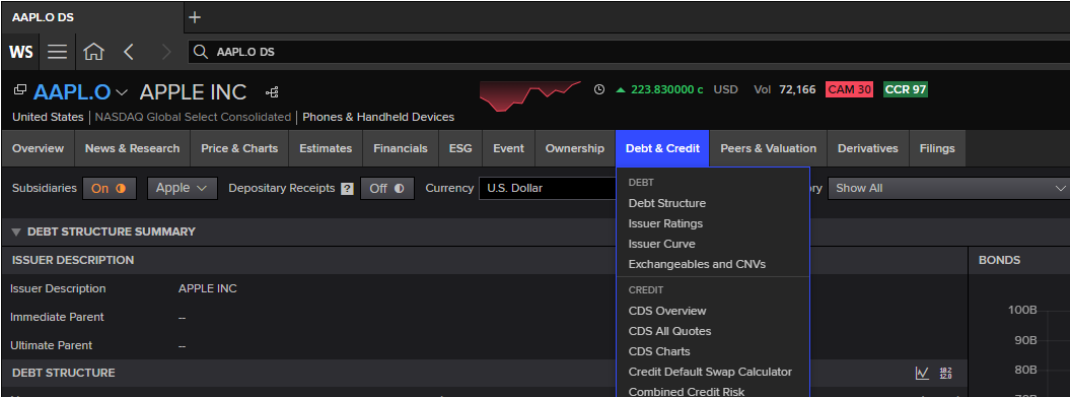


Credit ratings
in LSEG Workspace
Students Manual

LSEG Workspace provides access to both current and historical credit ratings of issuers. Simply click on "Issuer Ratings" under "Debt & Credit" to explore historical ratings from S&P, Moody's, and Egan-Jones.



Please note that although you can view ratings from various providers within the terminal, not all of them can be exported to an Excel file.

Rating Agency Name & Rating Type	Rating	Rating Date	Watch Code	Watch Eff. Date	Outlook	Outlook Eff. Date	Rating Endorsement	Affirmation Date
S&P Senior Unsecured [SSU] (Foreign)	AA+	04-Nov-2014	--	--	--	--	EUEUKE	17-May-2024
S&P Senior Unsecured [SSU] (Domestic)	AA+	30-Apr-2013	--	--	--	--	EUEUKE	17-May-2024
▶ S&P Long-term Issuer Rating [SPI] (Foreign)	AA+	23-Apr-2013	--	--	STABLE	23-Apr-2013	EUEUKE	17-May-2024
▶ S&P Long-term Issuer Rating [SPI] (Domestic)	AA+	23-Apr-2013	--	--	STABLE	23-Apr-2013	EUEUKE	17-May-2024
S&P Short-term Issuer Credit Rating [SIS] (Foreign)	A-1+	24-Apr-2014	--	--	--	--	EUEUKE	17-May-2024
▶ S&P Short-term Issuer Credit Rating [SIS] (Domestic)	A-1+	24-Apr-2014	--	--	--	--	EUEUKE	17-May-2024
S&P Commercial Paper [SCP] (Foreign)	A-1+	24-Apr-2014	--	--	--	--	EUEUKE	17-May-2024
▶ Moody's Senior Unsecured [MSU] (Foreign)	Aaa	21-Dec-2021	--	--	--	--	EUEUKE	20-Nov-2024
▶ Moody's Senior Unsecured [MSU] (Domestic)	Aaa	21-Dec-2021	--	--	--	--	EUEUKE	20-Nov-2024
Moody's Most Recent Short-term Rating [MRS] (Domestic)	P-1	20-Nov-2024	--	--	STA	20-Nov-2024	EUEUKE	--
▶ Moody's Long-term Senior Unsecured MTN Rating [MMU] (Foreign)	(P)Aaa	21-Dec-2021	--	--	--	--	EUEUKE	20-Nov-2024
▶ Moody's Long-term Issuer Rating [MIS] (Domestic)	WR	31-Mar-2004	--	--	--	--	--	--
Moody's Derived Long-term Issuer Rating [MDL] (Foreign)	Aaa	20-Nov-2024	--	--	STA	20-Nov-2024	EUEUKE	--

In Excel, you have the capability to review comprehensive historical ratings data for Moody's and Egan-Jones. This includes the ability to upload information for both domestic and foreign bonds, along with the corresponding rating confirmation dates.

	A	B	C	D	E	F	G	H	I
1	Apple Inc		23-Jan-2025 12:15						
2									
3	Issuer Ratings								
4									
5	Rating Agency Name & Rating Type	Rating	Rating Date	Watch Code	Watch Eff. Date	Outlook	Outlook Eff. Date	Rating Endorsement	Affirmation Date
6	S&P Senior Unsecured [SSU] (Foreign)	AA+	04-Nov-2014	--	--	--	--	EUEUKE	17-May-2024
7	S&P Senior Unsecured [SSU] (Domestic)	AA+	30-Apr-2013	--	--	--	--	EUEUKE	17-May-2024
8	S&P Long-term Issuer Rating [SPI] (Foreign)	AA+	23-Apr-2013	--	--	STABLE	23-Apr-2013	EUEUKE	17-May-2024
9	S&P Long-term Issuer Rating [SPI] (Domestic)	AA+	23-Apr-2013	--	--	STABLE	23-Apr-2013	EUEUKE	17-May-2024
0	S&P Short-term Issuer Credit Rating [SIS] (Foreign)	A-1+	24-Apr-2014	--	--	--	--	EUEUKE	17-May-2024
1	S&P Short-term Issuer Credit Rating [SIS] (Domestic)	A-1+	24-Apr-2014	--	--	--	--	EUEUKE	17-May-2024
2	S&P Commercial Paper [SCP] (Foreign)	A-1+	24-Apr-2014	--	--	--	--	EUEUKE	17-May-2024
3	Moody's Senior Unsecured [MSU] (Foreign)	Aaa	21-Dec-2021	--	--	--	--	EUEUKE	20-Nov-2024
4		Aa1	04-Nov-2014						
5	Moody's Senior Unsecured [MSU] (Domestic)	Aaa	21-Dec-2021	--	--	--	--	EUEUKE	20-Nov-2024
6		Aa1	23-Apr-2013						
7	Moody's Most Recent Short-term Rating [MRS] (Domestic)	P-1	20-Nov-2024	--	--	STA	20-Nov-2024	EUEUKE	--
8	Moody's Long-term Senior Unsecured MTN Rating [MMU] (Foreign)	(P)Aaa*	21-Dec-2021	--	--	--	--	EUEUKE	20-Nov-2024
9		(P)Aa1	20-Aug-2015						
0	Moody's Long-term Issuer Rating [MIS] (Domestic)	WR	31-Mar-2004	--	--	--	--	--	--
1		Ba2	10-Jul-2000						
2		B1	25-Oct-1999						
3	Moody's Derived Long-term Issuer Rating [MDL] (Foreign)	Aaa	20-Nov-2024	--	--	STA	20-Nov-2024	EUEUKE	--
4	Moody's Commercial Paper [MCP] (Domestic)	P-1	24-Apr-2014	--	--	--	--	EUEUKE	20-Nov-2024
5	Moody's Corporate Family Rating [MCF] (Domestic)	WR	31-Mar-2004	--	--	--	--	--	--
6		Ba2	10-Jul-2000						
7		B1	25-Oct-1999						
8	Egan-Jones Senior Unsecured [EJU] (Foreign)	A+	13-Oct-2022	--	--	--	--	--	13-Jan-2025
9		AA	04-May-2016						
0	Egan-Jones Senior Unsecured [EJU] (Domestic)	A+	12-May-2022	--	--	--	--	--	13-Jan-2025
1		AA-	19-Feb-2020						
2		AA	17-Feb-2016						
3	Egan-Jones Commercial Paper [EJC] (Foreign)	A1+	04-May-2016	--	--	--	--	--	13-Jan-2025
4	Egan-Jones Commercial Paper [EJC] (Domestic)	A1+	17-Feb-2016	--	--	--	--	--	13-Jan-2025
5	Note: the highlighted sections show the most common Long-term Issuer Ratings for the three global Ratings Agencies (S&P, Moody's, Fitch), when available.								
6	You are not permitted to export historical S&P ratings.								
7	* Preliminary Rating								