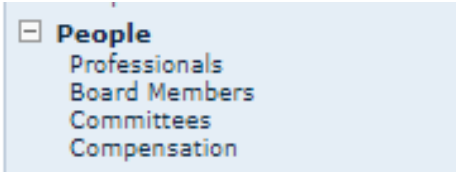


**CEO & board data**  
**in Capital IQ & Capital IQ Pro**  
**Students Manual**

Capital IQ & Capital IQ Pro offer comprehensive information about the board and its structure for each company in their database. Additionally, detailed information about each individual is available, allowing for an in-depth analysis of their involvement in the daily activities of the company or any other firms. To access this information, navigate to the "People" category, conveniently located on the left-side bar of every company profile.



The "Professionals" section encompasses all hired personnel associated with the company's board. Each individual's profile includes a detailed background description, job functions within the company, memberships in other boards, and any affiliations with other companies.

Professionals	
<input type="button" value="Copy to List"/> <input type="button" value="Add..."/>	
Name	Title Sort By Rank ▼
Nadella, Satya	Chairman & CEO
<p><b>Background:</b> Mr. Satya Nadella is Chief Executive Officer and Director of Microsoft Corporation since February 04, 2014 and various leadership positions at Microsoft since joining Microsoft in 1992, including Executive Vice President of Cloud and Ent Search, Portal, and Advertising from 2008 to 2009. Mr. Nadella's roles also included Vice President of the Microsoft Business He earned a bachelor's degree in electrical engineering from Mangalore University, a master's degree in computer science fr Mr. Nadella served as a Director of Riverbed Technology, Inc.</p> <p><b>Specialty:</b> -</p> <p><b>Full Office Address:</b> One Microsoft Way   Redmond, Washington 98052-6399   United States</p> <p><b>Main Phone:</b> 425 882 8080</p> <p><b>Job Functions:</b> Chief Executive Officer, President (Prior), Unit President (Prior), Senior Key Executive (Prior), Other Key Ex</p> <p><b>Board Memberships:</b> BravoSolution US, Inc., Microsoft Corporation (NasdaqGS:MSFT), Nirvaha, Inc., Starbucks Corporati</p>	
Smith LCA, Bradford L.	President & Vice Chairman
<p><b>Background:</b> Mr. Bradford L. Smith, also known as Brad, is President of Microsoft Corporation since September 11, 2015 ar Vice President, General Counsel, and Secretary from 2011 to 2015, and served as Senior Vice President, General Counsel, a 2002 he spent three years leading the Legal and Corporate Affairs (LCA) team in Europe, then five years serving as the Dep active in several civic and legal organizations and in the broader technology industry. He has been an Independent Director and as Chair of the Leadership Council on Legal Diversity (LCLD). In addition, he Chairs the Board of the Washington State economics. He earned his J.D. from the Columbia University School of Law and studied international law and economics at t Burling from 1986 to 1993.</p> <p><b>Specialty:</b> -</p> <p><b>Full Office Address:</b> One Microsoft Way   Redmond, Washington 98052-6399   United States</p> <p><b>Main Phone:</b> 425 882 8080</p> <p><b>Job Functions:</b> President, Senior Key Executive (Prior), Secretary (Prior), Chief Legal Officer (Prior)</p> <p><b>Board Memberships:</b> Netflix, Inc. (NasdaqGS:NFLX)</p> <p><b>Other Company Affiliations:</b> TechNet (Prior)</p>	

Board Members gather similar information to the "Professionals" section but go further to include details about memberships in other boards. This section specifically describes the role of the person in each particular board they are affiliated with.

Board Members	
<a href="#">Copy to List</a>	<a href="#">Add...</a>
Name	Title Sort By Rank
<a href="#">Nadella, Satya</a>	Chairman & CEO
<p>Background: Mr. Satya Nadella is Chief Executive Officer and Director of Microsoft Corporation since February 04, 2014 and has been its Chairman since June 2021. Before being named CEO in February 2014, Mr. Nadella held various leadership positions at Microsoft since joining Microsoft in 1992, including Executive Vice President of Cloud and Enterprise from July 2013 to February 2014; President of Server and Tools Search, Portal, and Advertising from 2008 to 2009. Mr. Nadella's roles also included Vice President of the Microsoft Business Division. Before joining Microsoft, he was a Member of the Technology Executive Council at Intel. He earned a bachelor's degree in electrical engineering from Mangalore University, a master's degree in computer science from the University of Wisconsin - Milwaukee and a master's degree in business administration from the University of Washington. Mr. Nadella served as a Director of Riverbed Technology, Inc.</p> <p>Specialty: -</p> <p>Years on Board: 2014-Present</p> <p>Full Office Address: One Microsoft Way   Redmond, Washington 98052-6399   United States</p> <p>Main Phone: 425 882 8080</p> <p>Job Functions: Chief Executive Officer, President (Prior), Unit President (Prior), Senior Key Executive (Prior), Other Key Executive (Prior), Chairman of the Board, Member of the Board of Directors</p> <p>Other Boards: BravoSolution US, Inc., Nirvaha, Inc., Starbucks Corporation (NasdaqGS:SBUX), Fred Hutchinson Cancer Center (Prior), Intelliprep Technologies Inc. (Prior), Riverbed Technology (Prior)</p>	
<a href="#">Johnston, Hugh F.</a>	Independent Director
<p>Background: Mr. Hugh F. Johnston serves as Senior Vice President &amp; Chief Financial Officer at The Walt Disney Company since December 04, 2023. He serves as Independent Director at HCA Healthcare Inc. since March 2010 until November 30, 2023 and its Vice Chairman since July 8, 2015 until November 30, 2023. As a Member of the executive leadership team at PepsiCo, Mr. Johnston also joined PepsiCo in 1987 as a Business Planner and held various finance positions until 1999 when he left to join Merck &amp; Co., Inc. as Vice President of Retail Marketing since 1999 until 2001. Mr. Johnston served as a general manager in a variety of finance positions. He served a number of increasing leadership roles, including Senior Vice President of Transformation from 2005 to 2006. Prior to that, he served as PepsiCo's Senior Vice President of Mergers and Acquisitions in 2002. He served as the Chief Operating Officer of PepsiCo, Inc. since October 2006 and served as its Executive Vice President of Operations at PepsiCo, Inc. from November 2009 to 2010 and served as its Executive Vice President of Operations from October 2006 to November 2007. He served as President of Pepsi-Cola North America from November 2007 to June 2015. He served as a general management role as Vice President, Retail at Merck Medco, leading its retail pharmacy card business. He served as Vice Chairman at The American Beverage Association until April 2012. He served as a Director at AOL, Inc. Mr. Johnston served as an Independent Director at Oath Inc. from October 2012 to June 2015. He served as a Director at Oath Inc. from October 2012 to June 2015. He served as a Director of Accounting from the University of Chicago and a Bachelor's of Science degree in Finance from the Syracuse University. In addition, he is a member of the Federal Reserve Bank of New York Advisory Council, the Chicago Booth School CFO Forum Advisory Board, Syracuse University's Whitman School of Management Advisory Council, and the Peterson Institute for International Economics.</p> <p>Specialty: -</p> <p>Years on Board: 2017-Present</p> <p>Full Office Address: One Microsoft Way   Redmond, Washington 98052-6399   United States</p> <p>Main Phone: 425 882 8080</p> <p>Job Functions: Member of the Board of Directors, Member of Audit Committee, Chairman of Audit Committee</p> <p>Other Boards: HCA Healthcare, Inc. (NYSE:HCA), The American Beverage Association (Prior), The Pepsi Bottling Group, Inc. (Prior), Twitter, Inc. (Prior), Yahoo Inc. (Prior)</p> <p>Other Company Affiliations: The Walt Disney Company (NYSE:DIS), PepsiCo, Inc. (NasdaqGS:PEP) (Prior), The Pepsi Bottling Group, Inc. (Prior)</p>	

Capital IQ provides information about various committees within the company, including the titles of the directors associated with each committee. Additionally, users can access information about compensation, including a historical dataframe that offers insights into compensation trends over time.

Audit Committee	
<a href="#">Copy to List</a>	
Name	Title Sort by Rank
<a href="#">Johnston, Hugh F.</a>	Independent Director
<a href="#">List-Stoll, Teri L.</a>	Independent Director
<a href="#">Rodriguez, Carlos A.</a>	Independent Director
<a href="#">Stanton, John W.</a>	Independent Director

Compensation Committee	
<a href="#">Copy to List</a>	
Name	Title Sort by Rank
<a href="#">Rodriguez, Carlos A.</a>	Independent Director
<a href="#">Peterson, Sandra E.</a>	Lead Independent Director
<a href="#">Scharf, Charles W.</a>	Independent Director
<a href="#">Walmsley, Emma N.</a>	Independent Director

Primary Compensation Item: Total Annual Cash Compensation			
<a href="#">Copy to List</a>	Currency: Reported Currency	Conversion Method: Historical	<a href="#">Go</a>
Name	Title Sort by Rank		FY 2022 (USD)
<a href="#">Nadella, Satya</a>	Chairman & CEO		12,676,750
<a href="#">Smith, Bradford L.</a>	President & Vice Chairman		4,655,274
<a href="#">Hood, Amy E.</a>	Executive VP & CFO		4,637,915
<a href="#">Althoff, Judson B.</a>	Executive VP & Chief Commercial Officer		4,428,268
<a href="#">Young, Christopher David</a>	Executive Vice President of Business Development, Strategy & Ventures		4,588,876
<a href="#">Johnston, Hugh F.</a>	Independent Director		185,000
<a href="#">Peterson, Sandra E.</a>	Lead Independent Director		165,000
<a href="#">Pritzker, Penny S.</a>	Independent Director		160,000
<a href="#">Stanton, John William</a>	Independent Director		155,000

Within the screening menu, you have the option to select information about the board as an additional screening criterion. However, it's important to note that, as of now, there are no options available to download a list of boards for different companies or export this information as an Excel file using Capital IQ.

